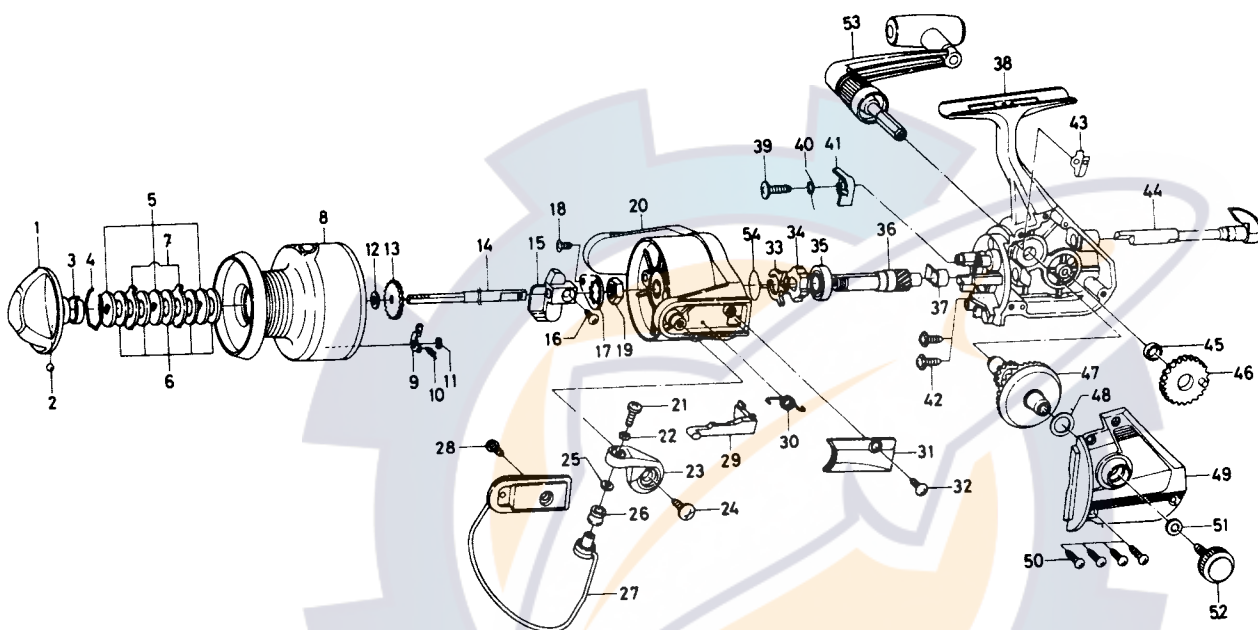


SPINNING REEL EL9000X



No. 4-11 L13-6501 Spool Assembly

| Key No. | Parts No. | Parts Name | Key No. | Parts No. | Parts Name |
|---------|-----------|-------------------------------|---------|-----------|----------------------------|
| 1 | E50-9701 | Drag knob | 28 | L01-1701 | Bail trip cam screw |
| 2 | 635-4701 | Click ball | 29 | L11-7301 | Bail trip lever |
| 3 | E32-8701 | Click leaf spring | 30 | L06-7001 | Bail spring |
| 4 | 171-7701 | Drag washer retainer | 31 | L11-5601 | Bail spring cover |
| 5 | L03-1301 | Key washer | 32 | E36-4201 | Bail spring cover screw |
| 6 | 373-3712 | Drag washer | 33 | L07-0701 | Anti-reverse pawl spring A |
| 7 | B89-9501 | Eared washer | 34 | L09-1701 | Anti-reverse ratchet |
| 8 | L13-6601 | Spool assembly | 35 | L03-6401 | Ball bearing |
| 9 | B07-8201 | Click pawl | 36 | L11-4401 | Pinion gear |
| 10 | 145-2101 | Click spring | 37 | L00-6001 | Pinion collar |
| 11 | 320-1402 | Click retainer | 38 | L13-6002 | Body assembly |
| 12 | L11-9001 | Spool washer | 39 | L06-6501 | Anti-reverse pawl screw |
| 13 | L11-8501 | Click gear | 40 | L06-6401 | Anti-reverse pawl spring B |
| 14 | L11-9501 | Main shaft | 41 | L07-8601 | Anti-reverse pawl |
| 15 | L11-4801 | Oscillating slider | 42 | L01-1601 | Bearing retainer screw |
| 16 | 351-8901 | Oscillating slider screw | 43 | E01-1801 | Anti-reverse cam spring |
| 17 | B02-1601 | Rotor nut holding plate | 44 | L10-0709 | Anti-reverse lever |
| 18 | L01-1702 | Rotor nut holding plate screw | 45 | 647-4101 | Oscillating gear collar |
| 19 | 340-8301 | Rotor nut | 46 | L11-4701 | Oscillating gear |
| 20 | L11-7207 | Rotor | 47 | L07-1701 | Drive gear |
| 21 | 353-9702 | Line roller screw | 48 | 371-2800 | Drive gear washer |
| 22 | 160-8101 | Lock washer | 49 | L13-6202 | Side cover |
| 23 | L10-5001 | Bail arm | 50 | B83-5001 | Side cover screw |
| 24 | E00-7602 | Bail arm screw | 51 | L02-2301 | Handle washer |
| 25 | 373-4501 | Line roller washer | 52 | L00-9101 | Handle lock screw |
| 26 | 250-4221 | Line roller | 53 | L01-2901 | Handle assembly |
| 27 | L13-3501 | Bail assembly | 54 | F21-2001 | Anti-reverse pawl spring C |